

TERRA PROJECT

CONCEPT BROCHURE



DEVELOPER



Since its inception, The Land Real estate Investment and Development Company (The Land) has evolved into one of the Middle East's leading real estate Developers. With solid financial backing, we have earned a reputation for developing projects that invariably receive international acclaim.

A member of the Al Modon Holding headquartered in Riyadh, Saudi Arabia, with regional offices in Qatar, Jordan, Bahrain, Palestine and the UAE, The Land's US \$20 billion development portfolio features apartments and homes, shopping malls, business parks, commercial office space, marinas and tourist resort destinations.

DEVELOPMENT MANAGER



Masharii Project Management is one of the GCC's premier project management and business development companies.

Every aspect of our business has the people, skills and resources to provide a distinctive, premium service. Our business is based on the development and nurturing of strong client relationships that invariably lead to repeat business, and we are proud that Masharii is recognized by an extensive

base of key clients, consultancies and advisers. Our client list includes some of the most esteemed names in the region.

Masharii is committed to providing sustainable working solutions for its clients, and this is mirrored in the way we function as a company.

CONCEPT DESIGN



JEROEN SCHIPPER

PATRICK MEIJERS

Orange Architects was established in 2010 as a multidisciplinary design firm, working in the fields of architecture, interior design and urban planning. The goal is to guide clients on a successful path towards inspiring, powerful and rich environments in every design-scale. From urban (re)development to product design; from collective housing to luxurious villa; from office planning to private interior.

Orange Architects has been working on ambitious projects in The Netherlands, Russia, Cyprus and the Middle East, particularly in Lebanon and Saudi Arabia. The designs draw great inspiration from both local culture and cutting-edge design techniques. The projects display Orange's prime merit: the ability to embrace local traditions - and fuse them with new, innovative ideas and forms - creating synergy between present and future, between what is happening today and what will be tomorrow.

Orange Architects develops appealing, conceptually sophisticated responses to complex spatial challenges. Our rational approach is tempered by our sensitivity to local character, the setting and the users.

Orange Architects takes pleasure in transforming your ideas, your dreams and your wishes into inspiring places to live, work and relax.

Team: Mario Acosta, Gloria Caiti, Angeliki Chantzopoulou, Fung Chow, Max Hissink, Dirk Hovens, Kristina Jasutiene, Abel Kalsbeek, Bas Kegge, Paul Kierkels, Tess Landsman, Casper van Leeuwen, Manuel Magnaguagno, Patrick Meijers, Julija Osipenko, Niek van der Putten, Erika Ruiz, Jeroen Schipper, Rutger Schoenmaker, Elena Staskute, Anouk van der Steenoven.

ORANGE

ARCHITECTS



LOCATION





SITE PLAN



OLIVE TREES



LIGHT GREY GRANITE

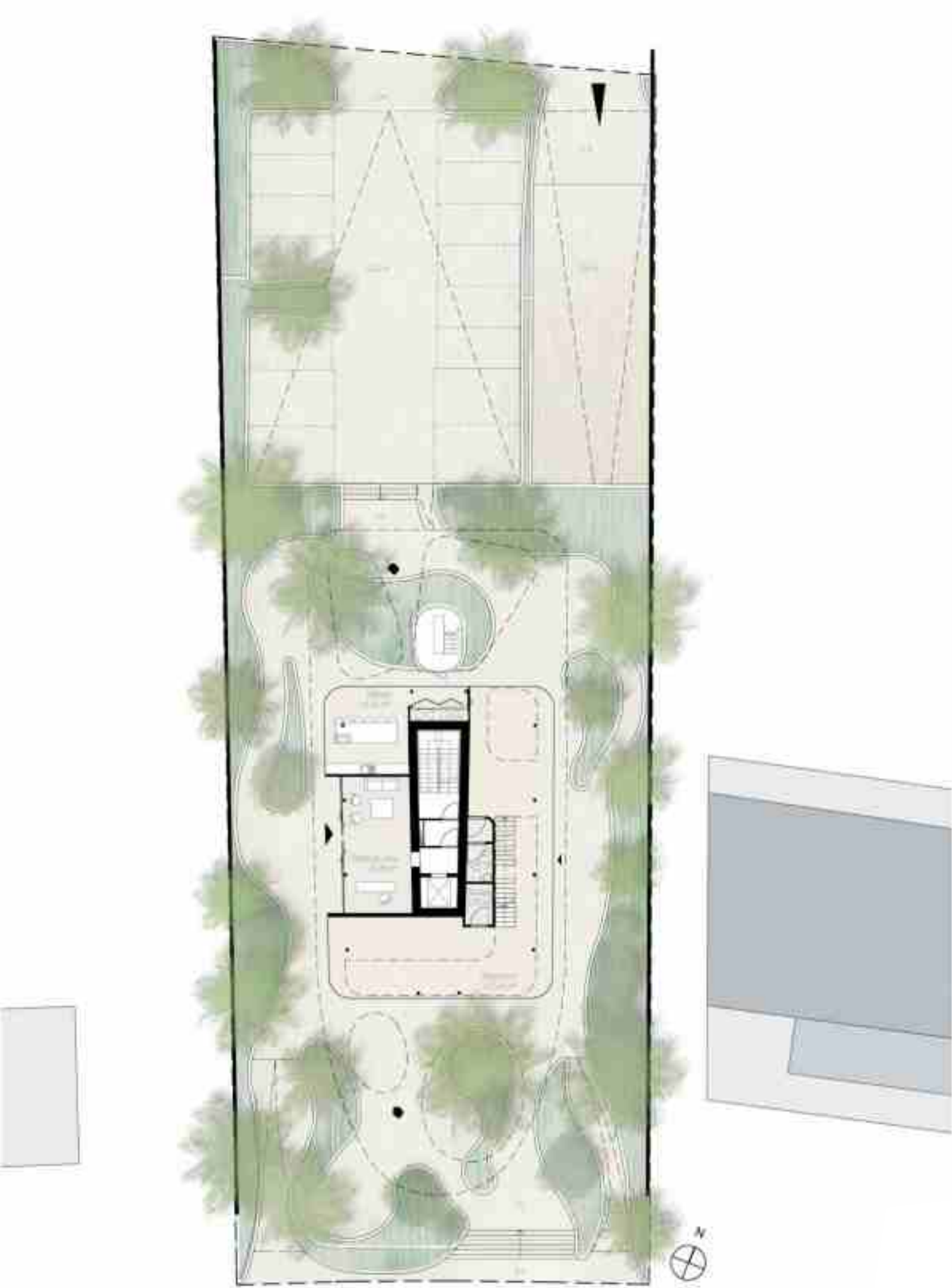


GREEN ATMOSPHERE



ATMOSPHERE

LANDSCAPE – MOOD BOARD



GROUND LEVEL



GREEN WALL



WHITE MARBLE PLATES

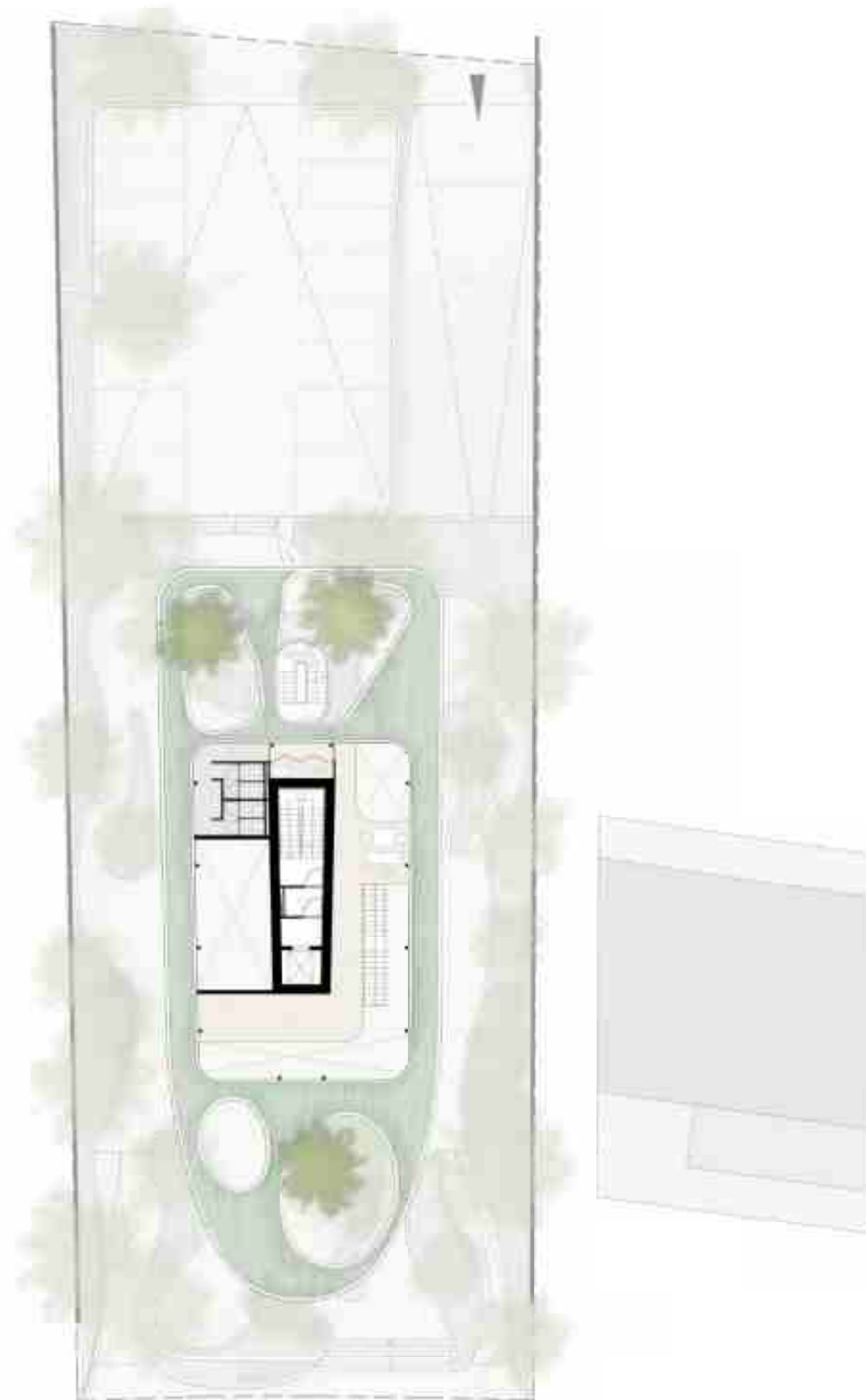


WARM COLOR FURNITURE



GREY MARBLE

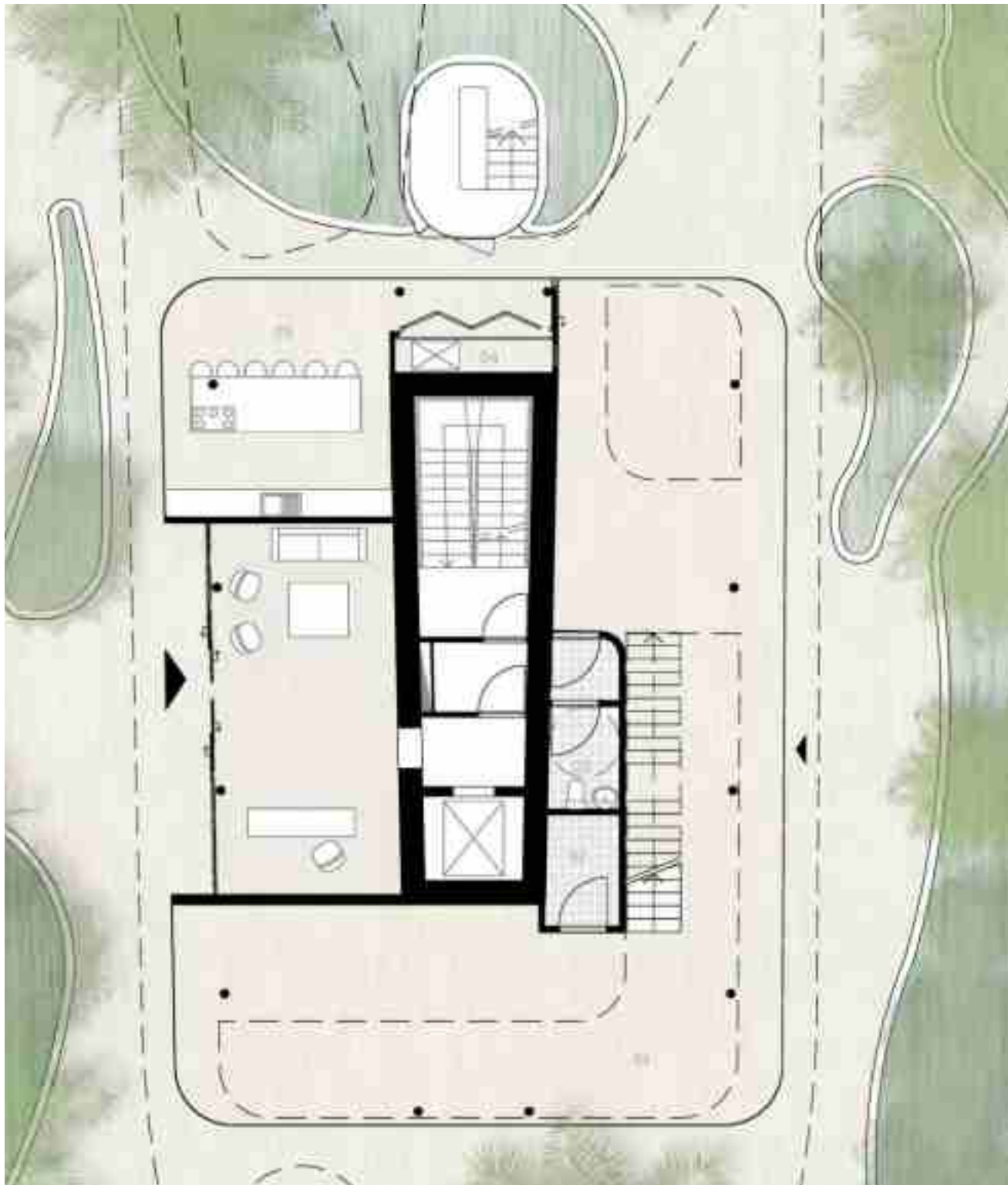
LOBBY - MOOD BOARD



MEZANINE

RETAIL SPACE

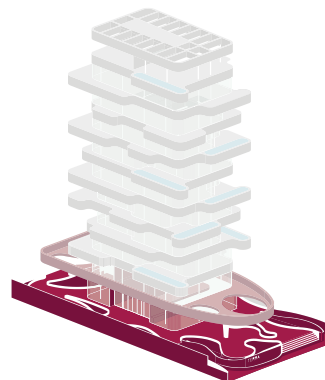




GROUND FLOOR RETAIL

160,1 sqm

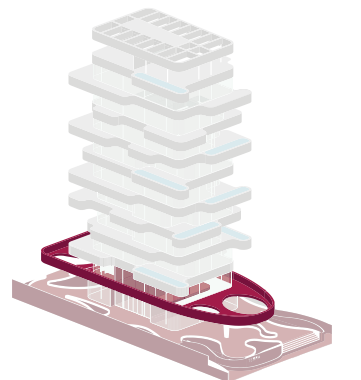
01. Showroom	118,08 sqm
02. Storage	3,17 sqm
03. Toilets	5,81 sqm
04. Storage	4,05 sqm
05. Kitchen	28.99 sqm



MEZZANINE RETAIL

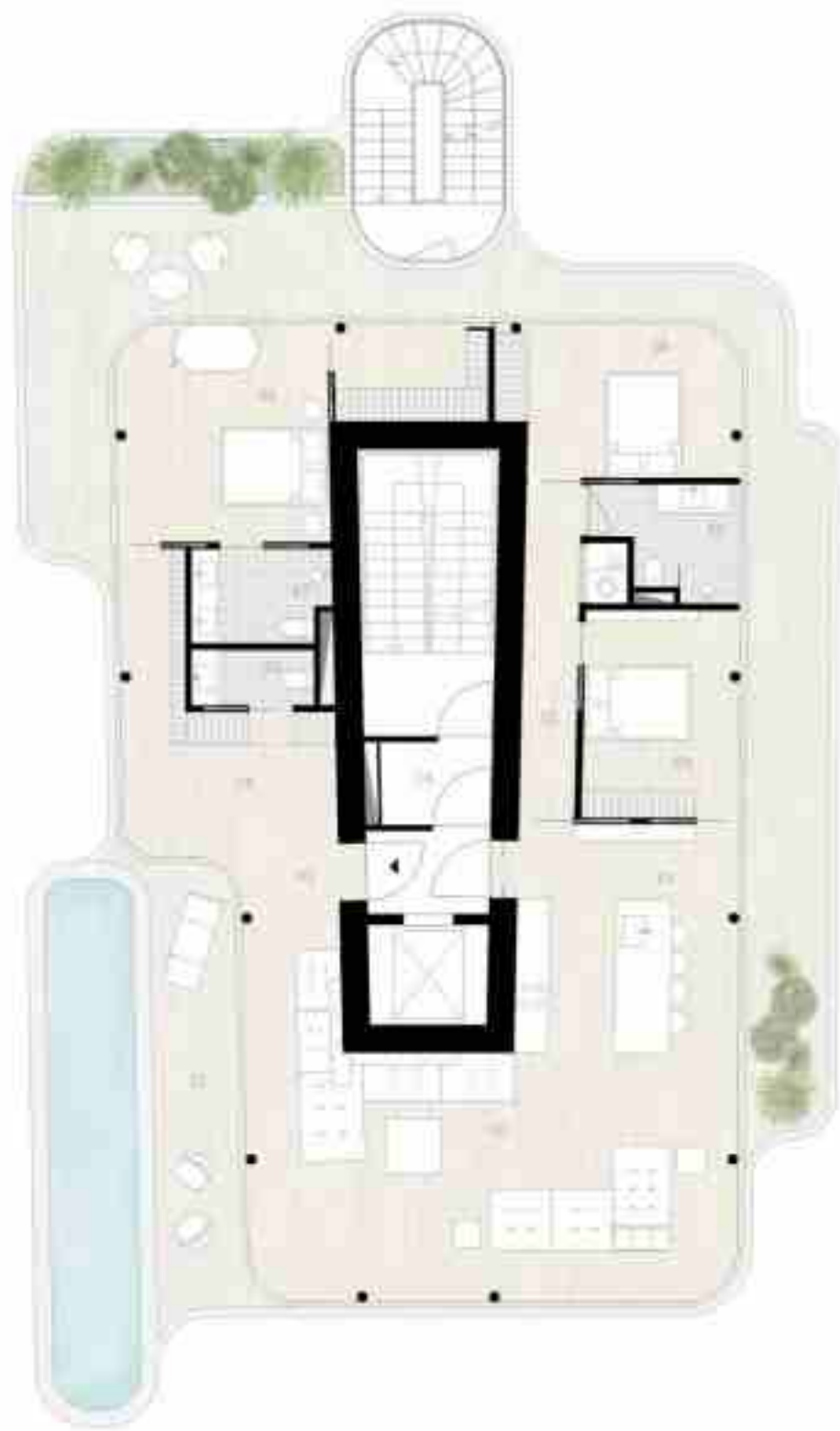
74,51 sqm

01. Mezzanine	52,30 sqm
02. Storage	3.17 sqm
03. Toilets	19,04 sqm



APARTMENT TYPES

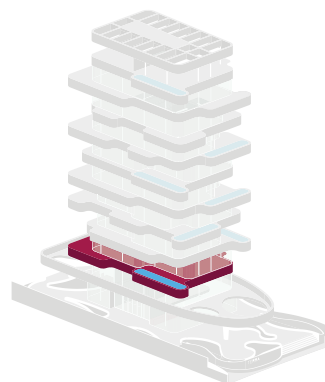




1st FLOOR APARTMENT A-01

280,32 sqm

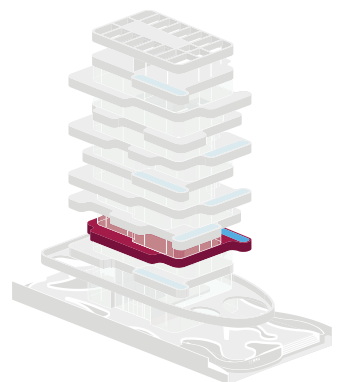
01. entrance	7,07 sqm	08. bedroom 01	12,72 sqm
02. living room	41,17 sqm	09. bedroom 02	11,53 sqm
03. kitchen/dining	17,18 sqm	10. bathroom	5,62 sqm
04. library	14,34 sqm	11. laundry	1,02 sqm
05. guest toilet	2,95 sqm	12. hallway	6,49sqm
06. master bedroom	21,54 sqm	13. outdoor terraces	93,06 sqm
07. master bathroom	4,73 sqm	14. core	37,9 sqm



2nd FLOOR APARTMENT A-02

280,81 sqm

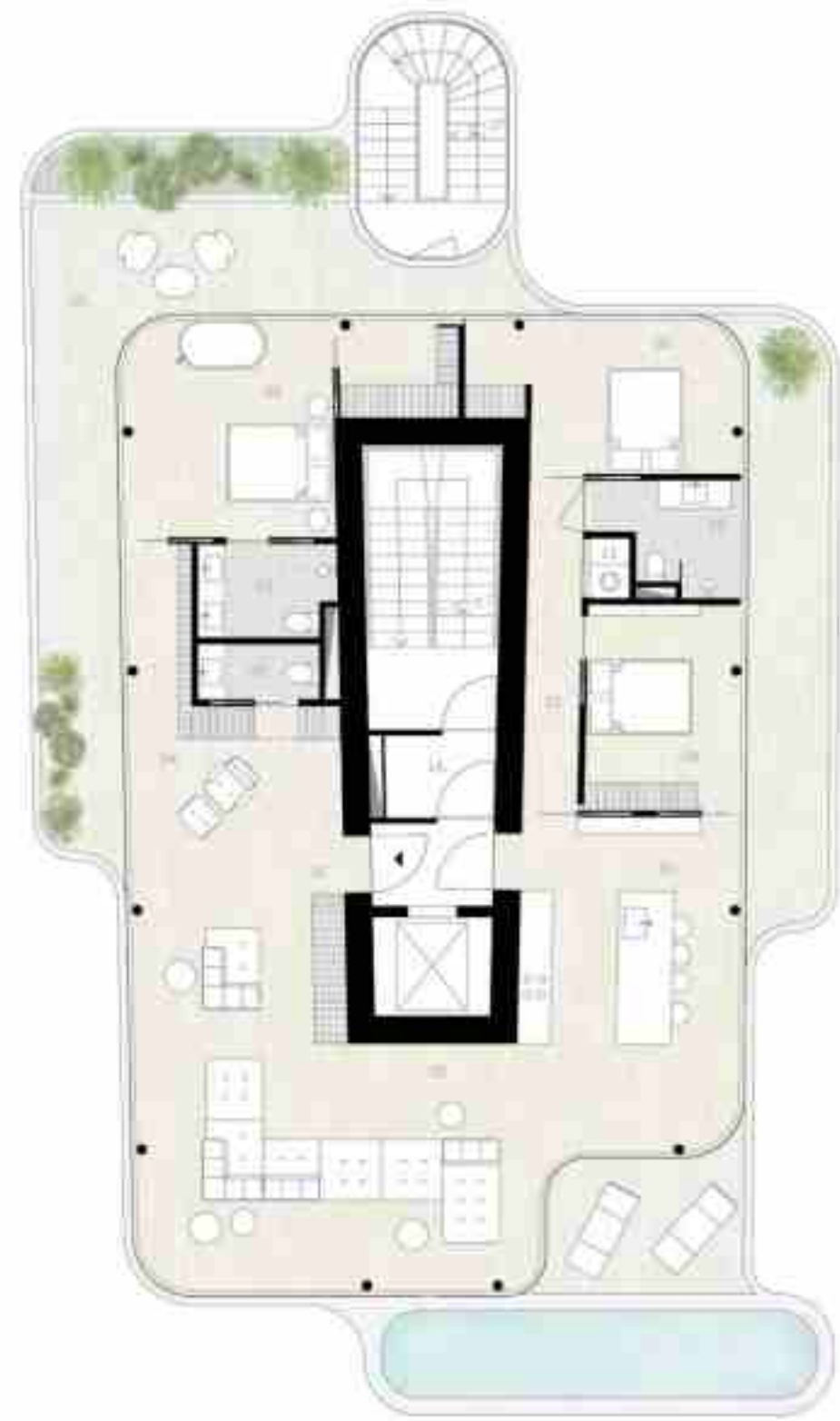
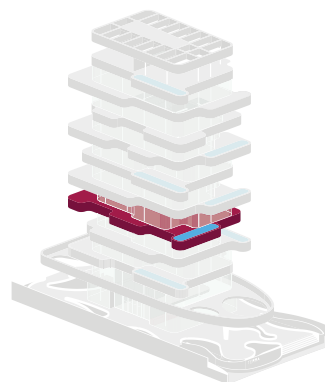
01. entrance	11,95 sqm	08. bedroom 02	11,53 sqm
02. living room	40,71 sqm	19. bathroom	5,62 sqm
03. kitchen/dining	19,81 sqm	10. laundry	1,02 sqm
04. guest toilet	2 sqm	11. hallway	6,49 sqm
05. master bedroom	22,99 sqm	12. outdoor terraces	102.52 sqm
06. master bathroom	5,55 sqm	13. core	37,9 sqm
07. bedroom 01	12,72 sqm		





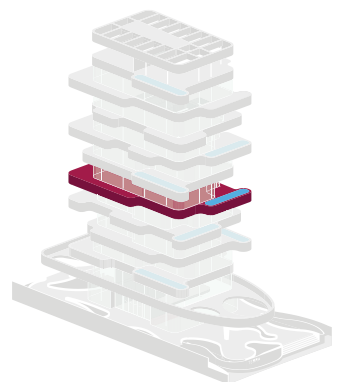
3rd FLOOR APARTMENT A-03 279,69 sqm

01. entrance	8,92 sqm	08. bedroom 01	13,85 sqm
02. living room	42,08 sqm	09. bedroom 02	11,53 sqm
03. kitchen/dining	17,18 sqm	10. bathroom	5,63 sqm
04. library	10,88 sqm	11. laundry	1,02 sqm
05. guest toilet	2 sqm	12. hallway	6,49 sqm
06. master bedroom	21,86 sqm	13. outdoor terraces	96,05 sqm
07. master bathroom	5,55 sqm	14. core	37,9 sqm



4th FLOOR APARTMENT A-04 281,32 sqm

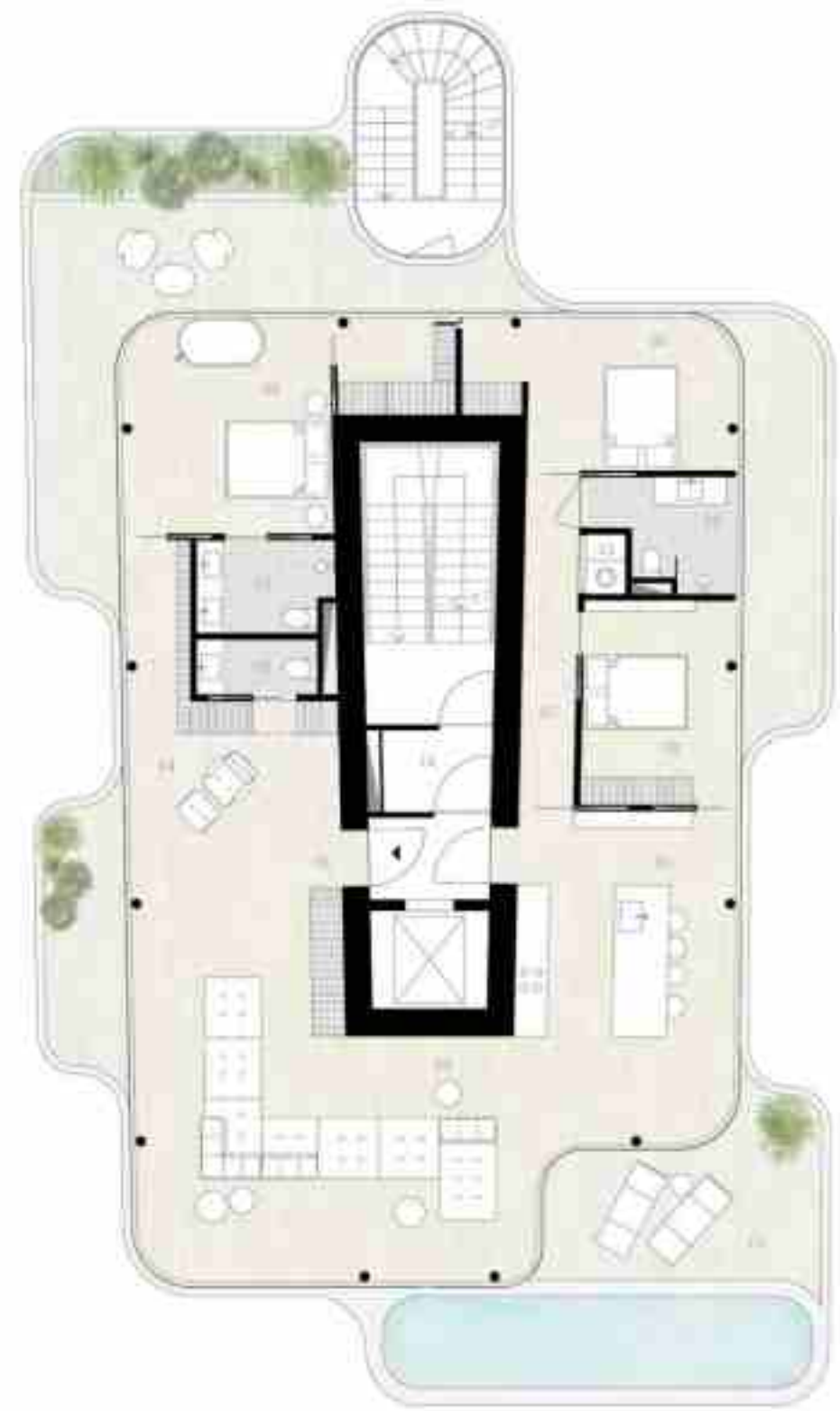
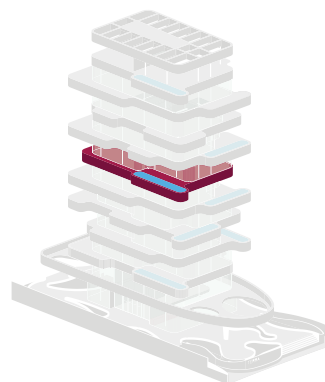
01. entrance	5,34 sqm	08. bedroom 01	13,85 sqm
02. living room	51,39 sqm	09. bedroom 02	11,53 sqm
03. kitchen/dining	17,18 sqm	10. bathroom	5,63 sqm
04. library	13,6 sqm	11. laundry	1,02 sqm
05. guest toilet	2,95 sqm	12. hallway	6,49 sqm
06. master bedroom	20,41 sqm	13. outdoor terraces	96,05 sqm
07. master bathroom	4,73 sqm	14. core	37,9 sqm





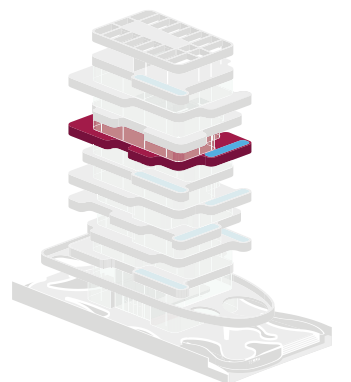
5th FLOOR APARTMENT A-05 279,78 sqm

01. entrance	5,34 sqm	08. bedroom 01	13,85 sqm
02. living room	51,39 sqm	09. bedroom 02	11,53 sqm
03. kitchen/dining	17,18 sqm	10. bathroom	5,63 sqm
04. library	13,6 sqm	11. laundry	1,02 sqm
05. guest toilet	2,95 sqm	12. hallway	6,49 sqm
06. master bedroom	20,41 sqm	13. outdoor terraces	95,52 sqm
07. master bathroom	4,73 sqm	14. core	37,9 sqm



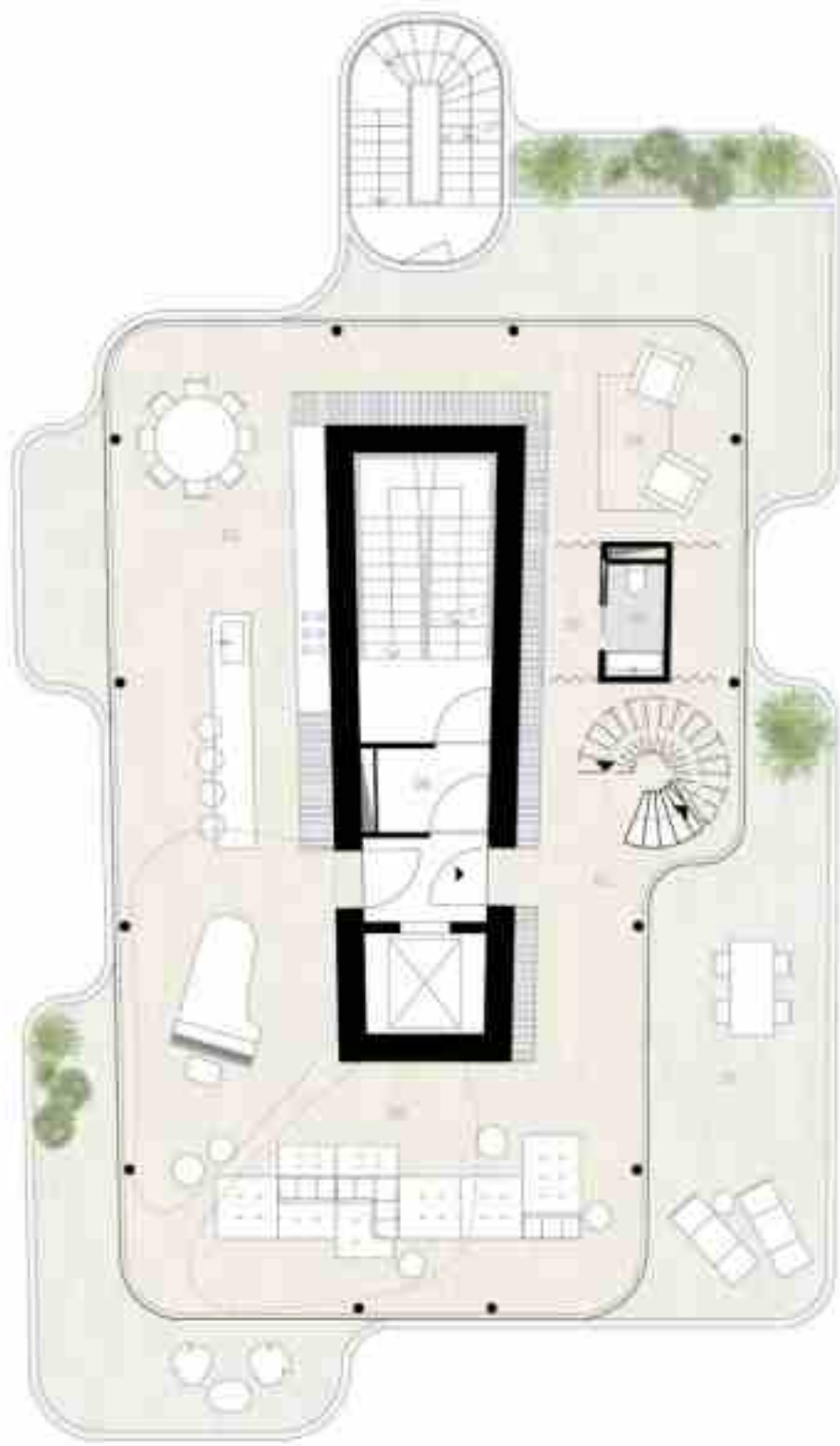
6th FLOOR APARTMENT A-06 282,12 sqm

01. entrance	5,34 sqm	08. bedroom 01	13,85 sqm
02. living room	51,39 sqm	09. bedroom 02	11,53 sqm
03. kitchen/dining	17,18 sqm	10. bathroom	5,63 sqm
04. library	13,6 sqm	11. laundry	1,02 sqm
05. guest toilet	2,95 sqm	12. hallway	6,49 sqm
06. master bedroom	20,41 sqm	13. outdoor terraces	90,1 sqm
07. master bathroom	4,73 sqm	14. core	37,9 sqm



PENTHOUSE

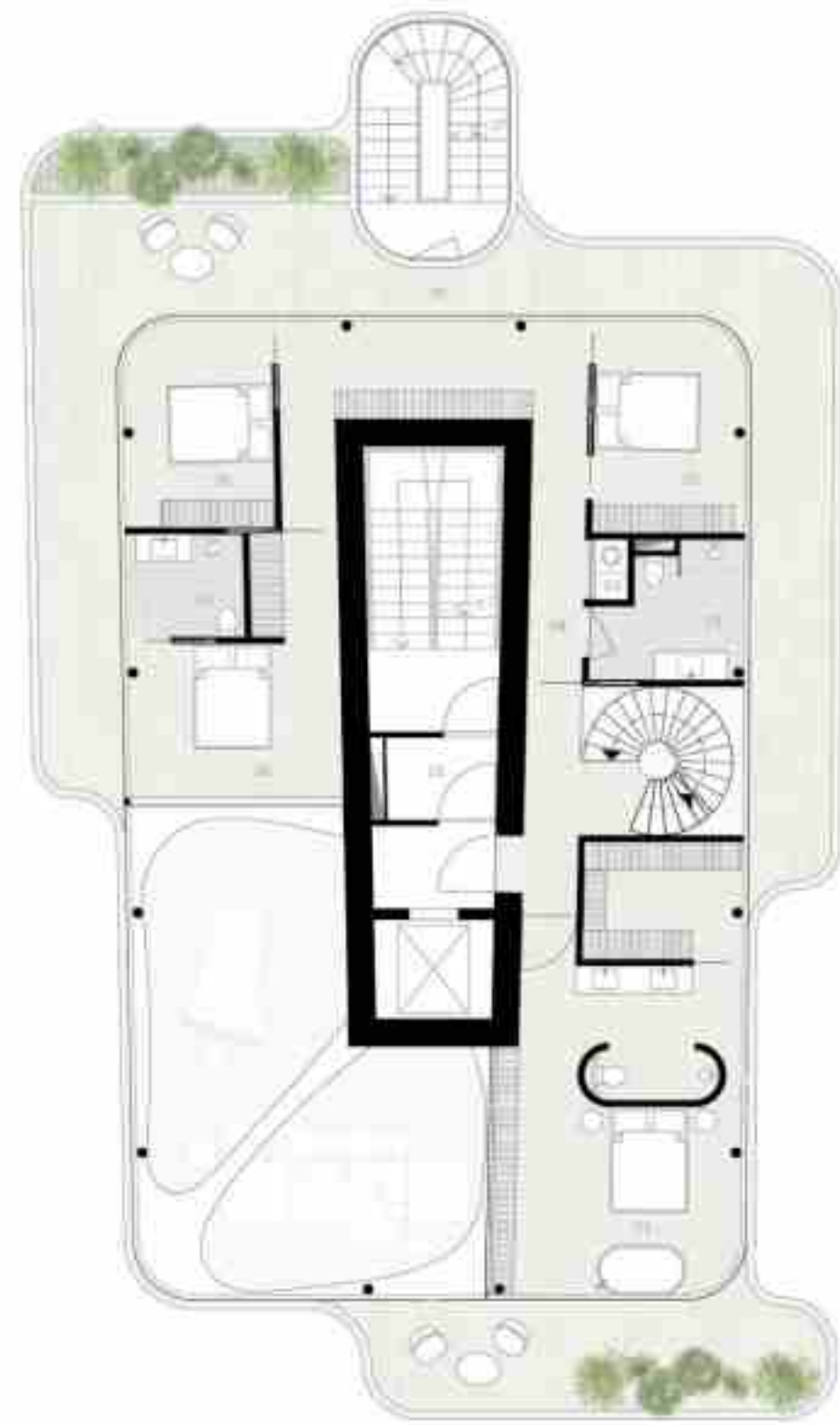
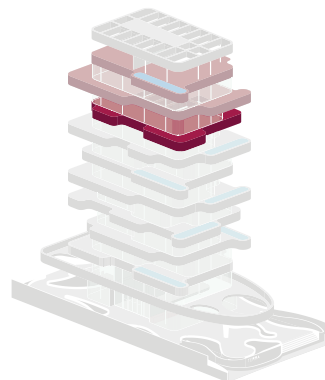




7TH FLOOR – PENTHOUSE

281,7 sqm

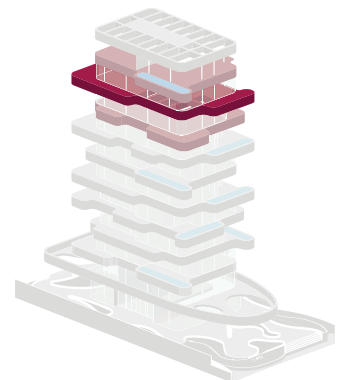
01. entrance	21,81 sqm	05. guest toilet	2,52 sqm
02. living room	57,92 sqm	06. hallway	6,56 sqm
03. kitchen/dining	37,27 sqm	07. outdoor terraces	94,48 sqm
04. library	23,24 sqm	08. core	37,9 sqm

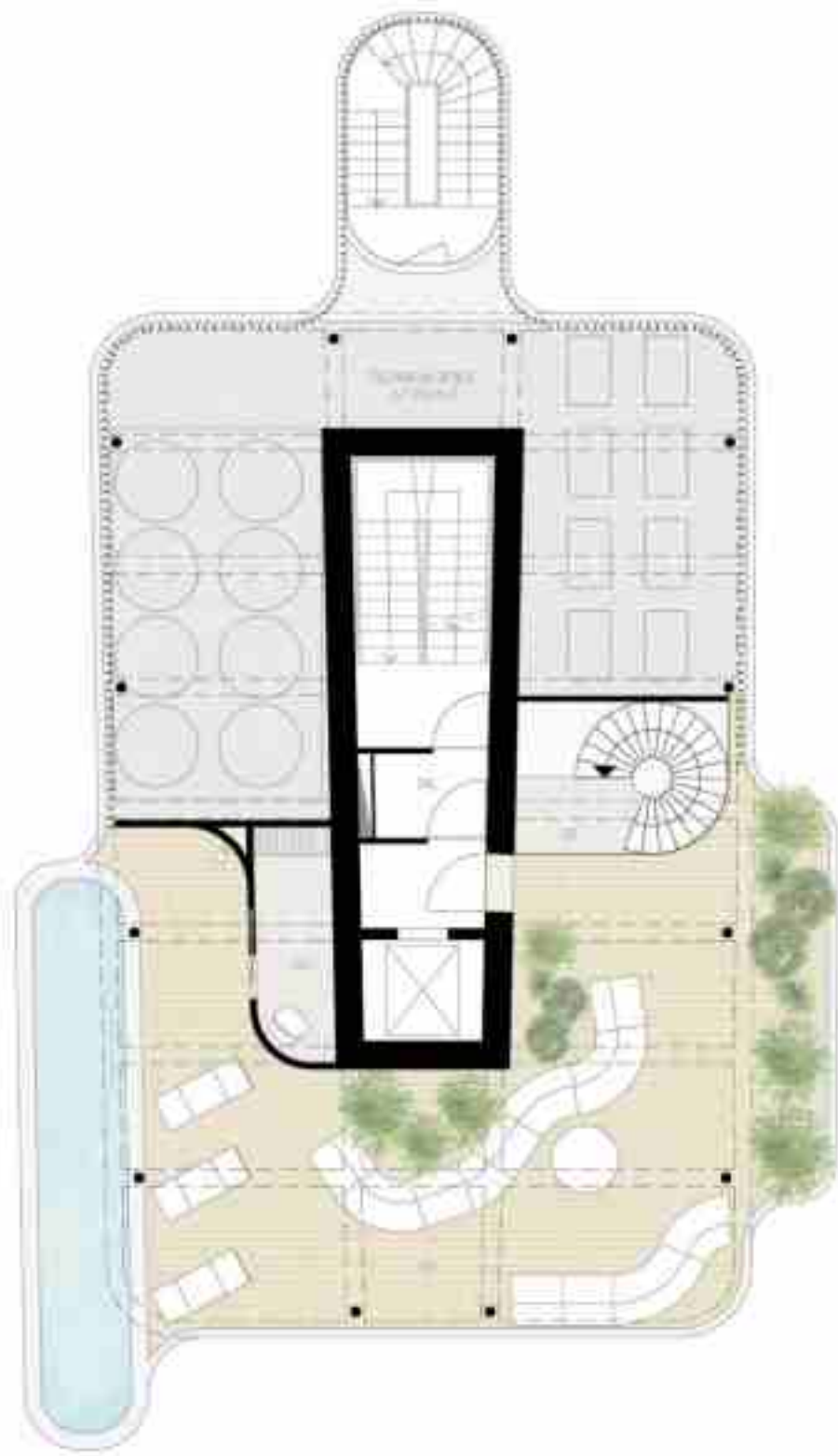


8TH FLOOR – PENTHOUSE

285.76 sqm

01. master bedroom (incl. bathroom and walk-in closet)	35,39 sqm	05. bedroom 02	11,03 sqm
02. bedroom 01	11,36 sqm	06. bedroom 03	15,25 sqm
03. bathroom	6,93 sqm	07. private bathroom	4,55 sqm
04. laundry	0,95 sqm	08. hallway	23,9 sqm
		09. outdoor terraces	93,17 sqm
		10. core	37,9 sqm





9TH FLOOR – PENTHOUSE ROOF TERRACE 157,68 sqm

01. changing room	6,05 sqm
02. stairwell	2,86 sqm
03. roof terrace	110,87 sqm
04. core	37,9 sqm

